

Highway 2

The Journey and The Destination



Highway 2

Winding through lives and landscapes -

A call to for artists and sponsors

We invite you to contribute to the multi media exhibit, **Highway 2 - the journey and the destination** - which will be held at the Modest Fly Art Studio and Gallery in September 2014. We are seeking commitments from artists and sponsors, including jpeg images of work samples and/or sponsorship commitments, by Monday, June 16, and very much hope that your work will be a part of this artistic, educational and promotional opportunity.

Stretching from the ocean to the desert, Highway 2 spans the breadth of the California experience. Where it crosses the San Gabriel Mountains it is known as the Angeles Crest Highway, and it is in this portion of road that there is an undeniable magic, an allure, a mingling of scenic wonder and technical road, beauty and danger, tranquility and excitement.

Wound about all of this, integral to the expression of the experience, there is art. Art that comes from the bounty of the forest, art that is an expression of the sounds and sites of that land, art that captures bits and pieces of the scenery, art that is inspired by the trees, the sky, the song of birds, the roar of finely tuned engines, the winding highway itself. We will bring the art of the forest - and an awareness of the destinations which lay within it - to the Modest Fly and to the greater foothills community through this exhibit, and through an extensive public relations effort that will highlight the art, the artists, and the places in the forest that many local residents may not even know exist.



**David J. Cline,
Photographer**



**Hooman Salari
Graphic Designer, Artist,
Motorcycle Enthusiast**





**Darren Martinelli,
woodcarver,
Newcombs Ranch**



**Kat High,
Founder
Haramokngna
American Indian
Cultural Center,
Native American
Storyteller**

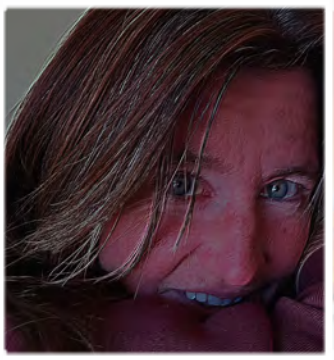




Allan Roman Reyes
Arts Advocate and Liaison,
Plein Air Painter



Corina Roberts
Photographer



Highway 2

More Than Art - A Chance to Educate

Art inspires. Art questions. Art informs. And art can educate. We would like to use this exhibit as a tool for teaching and for expanding the awareness of its audience about the past and present of the Angeles National forest; a past that is rich in history and a present that includes independently owned enterprises such as Waterman Ski Area, Newcombs Ranch and Mt. Wilson Observatory. A highway that takes us all the way to Wrightwood where a whole community of independent business, artists and individuals reside.

One key component we hope to include is indigenous art - works created by members of the Native American community either relating to the forest or made from forest materials. Another key component is art that informs about destinations in the Angeles. For example, most of the key head staff at Mount Wilson Observatory are also amazing photographers. Including their work can bring an awareness to people residing nearby who may not even be aware that Mt. Wilson exists. I am personally passionate about including art that relates to the use of the highway...that makes us aware of all of those we share the road with.

Finally, we are also seeking financial sponsorships for the show and hope these will come from relevant businesses - those who will benefit from being included in advertising. We are seeking sponsorships beginning at the \$100.00 level, which will give sponsoring groups and businesses recognition on all advertising as well as the show itself. Please consider supporting this effort by being a sponsor.

Highway 2

Contact Information and Work Samples Online

Corina Roberts, Dream Leader, Highway 2

Contact for submitting work samples and sponsorships. Please contact by June 16, 2014

(email is best contact method)

redbirds_vision@hotmail.com

(626) 432-1874

(Founder of Redbird, a non profit Native American and environmental association celebrating twenty years of community service in 2014)

Work Samples - Visit the Forest Recovery Project's Online Gallery and Store at
<http://forest-recovery-project.smugmug.com>

You can find **Redbird** on Facebook and the web:

<http://www.facebook.com/ChilaoSchool>

<http://www.facebook.com/RedbirdsVision>

Forest Recovery Project Group:

<http://www.facebook.com/groups/172558219433894/>

Corina Roberts on facebook:

<http://www.facebook.com/corina.roberts.1>

Redbird website

<http://www.RedbirdsVision.org>